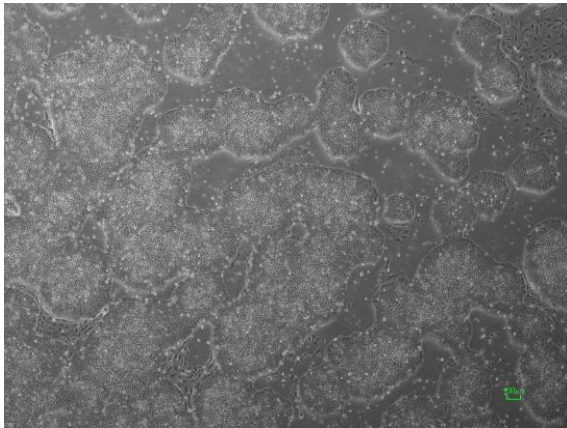
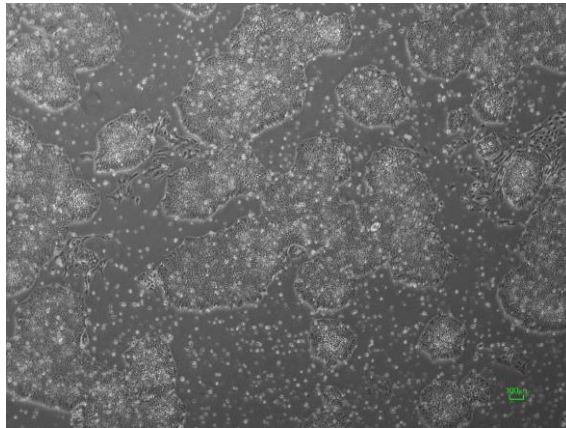


【 CiRA-jk-0032 】 Morphology of iPSC colonies

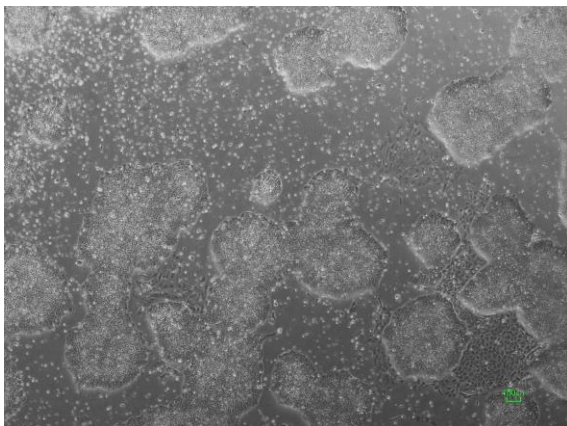
CiRA -jk-0032-A: passage-2



CiRA -jk-0032-B: passage-2



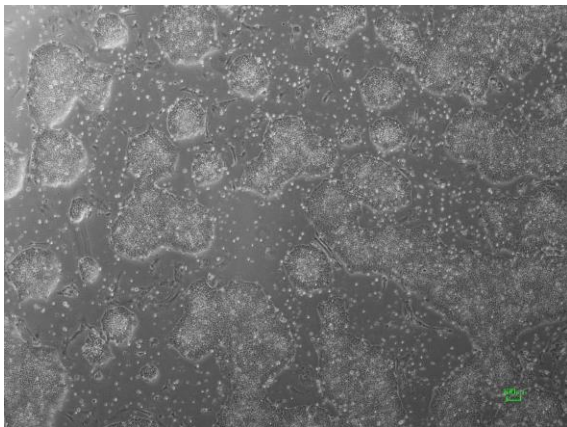
CiRA -jk-0032-C: passage-2



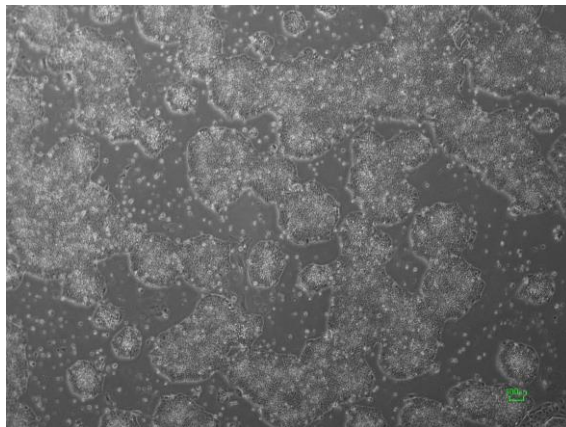
CiRA -jk-0032-D: passage-2



CiRA -jk-0032-E: passage-2



CiRA -jk-0032-F: passage-2



(All images were captured at 4x magnification)